

**Issue no. 03/2015: MAHLE OX filters with fleece end cap**

When assembling MAHLE oil filter inserts with the OX sales identifier, a bit more effort is required. There is a simple, practical reason for this.

To ensure a perfect seal between the clean and dirty sides of the oil circuit, the perforation in the fleece end cap developed by MAHLE is slightly smaller than the corresponding counterpart in the housing cover. The fleece end cap is thus pressed in between the inner tube (filter) and the standpipe (cover), thereby acting as a “chambered seal”.

TIP: To decrease the slightly greater effort required, the fleece can be wetted with fresh engine oil prior to assembly.

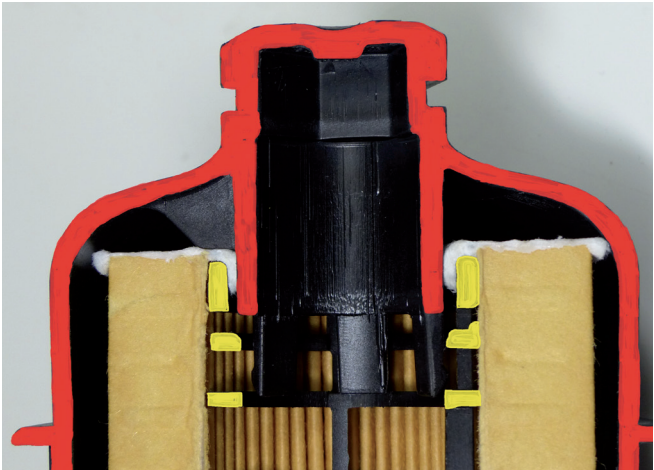


Figure 2: During assembly, the fleece (white) is pressed in between the inner tube (yellow) and the standpipe (red), thus ensuring a complete seal.

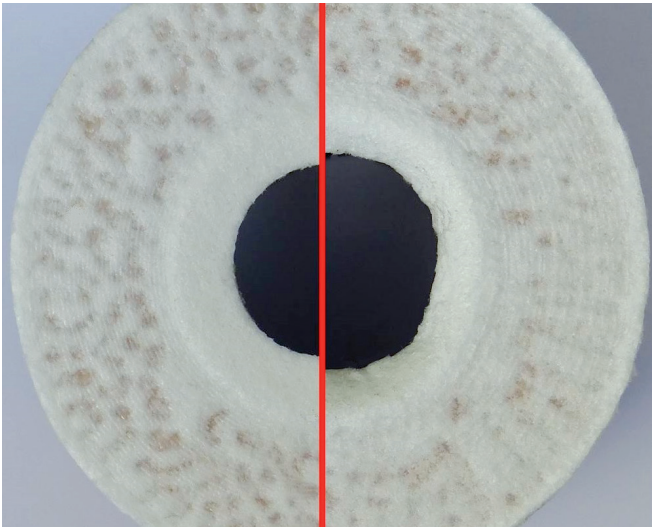


Figure 1: Clearly evident by comparison: the new fleece end cap on the left and after assembly on the right.



Figure 3: Different filters—same technology. Fleece end caps in different versions