

MH 2016 – Filtro de Combustible - Blindagua

Fecha: Diciembre 2016

Código Producto: KC575 – (FTKC00575-00009120)

Línea motora:

**CHEVROLET/ JOHN DEERE /
SCANIA / VOLVO**

(Siguen aplicaciones en página 2 y 3)

Características Técnicas

Rosca: 1"14 UNS-2B

Diámetro externo: 114,20 mm

Altura total: 224,50 mm

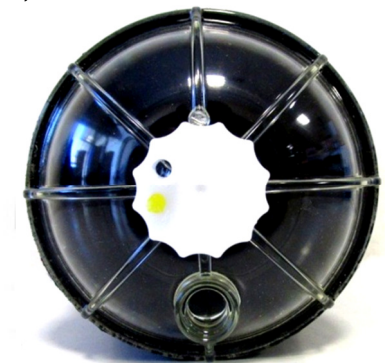
Código de barras: 7894766658772

Cantidad múltiplo de ventas: 1

Intercambios: PARKER: R9010M; R12010M; R9030M

MANN WK1060/1; WK1060/2/ VOLVO: 3989632; 2056904;

8159975 / SCANIA: 1518512; 1393640



GENERAL MOTORS	SCANIA	SCANIA
12.170 Caterpillar 3116 96->02	K 114 DSC12-02,DC12-05 03->	P 340 DC11-08 11/06->
14.190 Caterpillar 3116 96->02	K 124 DSC12-01,DSC12-02,DC12-01 98->	P 360 DC13-06 04/10->
15.190 Caterpillar 3116 97->	K 124 DSC12-05,DC12-05 03->	P 420 DC12-01 04->
16.220 Caterpillar 3116 96->02	K 124 EB, HB, IB DSC12 98->	P 420 DC12-06 Euro III 11/06->
JOHN DEERE	K 230 DC9-19 01/05->	P 94 DSC11-75 / DSC9-12 ->06/98
STS9750 Cosechadoras	K 270 DC9-20 01/05->	P 94 GANZ260 DSC9-11 98->
SCANIA	K 310 DC9-21 01/05->	P, R, T 114 DSC9 12 / DSC12 02 TURBO 07/98->
114 P/R/T DSC11-75/9/12 98->	K 340 DC11-03 01/05->	P, R, T 114 GANZ330 DSC11-75 98->
124 P/R/T DSC 12-01, 02, 09 98->	K 360 DSC12-02 01/05->	P, R, T 124 CANAVIEIRO "DC12 - 420 INJEÇÃO ELET. 3/99>
124 P/R/T DSC12-02 99->	K 380 DC11-04 01/05->	P, R, T 124 DC12 - 420 INJEÇÃO ELETRÔNICA 03/99->
164 R DC16-02 01/02->	K 420 DSC12-01 01/05->	P, R, T 124 DSC11-75 / DSC9-12 / DSC12-02 TURBO E INTERCOOLER ->06/98
Camiones SÉRIE P/R/G EURO V 12->	K 94 DSC9-15 98->	P, R, T 124 DSC9-12 / DSC12-02 TURBO INTERCOOLER 07/98->
F 230 DC9.13 07/09->	L 94 IB, HB, VB, LB DSC9.11 98->	P, R, T 124 GANZ360 (4X2) e (6X4)
F 94 DSC9-11,DC9-01,9-03 98->	LK 141 03-05 DC12 24V SOHV L6	R 124 GA DC12-01 98->
F 94 HB, K94 IB, L94 IB, UB DSC9-11 98->	LS 110 DC 12 24V SOHV L6 05-05	R 164 GA DSC12-02
G 360 DC13 114 E5 12->	LS 76 DC 12 24V SOHV L6 01-05	R 380 DC11-04 05->
G 360 EURO V DC09 112-360 E6 13->	P 230 DC 09-13 11/06->	R 380 DC12-18 09/06->
G 380 D12-17 11/06->	P 230 DC 09-19 01/04->	R 420 DC12-01 05->
G 380 DC12-17 Euro III 01/08->	P 270 DC 9-12 11/06->	R 420 DC12-06 11/06->
G 420 DC12-06 Euro III 07->	P 270 DC 9-20 01/04->	R 420 HighLine DC12-06 01/08->
G 440 DC13 10-440 E5, DC13 109-440 E6 04/10->	P 310 DC9-11 11/06->	R 440 DC13-10/109-440 10/07->
G 470 DT12-06 11/06->	P 310 DC9-21 04->	R 440 DT12-18 11/06->
K 114 DSC11,DSC12-01,DSC12-02,DC12-01 98->	P 340 DC11-03 04->	R 440 HighLine DT12-18 01/08->

SCANIA	VOLVO	VOLVO
R 470 HighLine DT12-06 01/08->	B10M (Eco Articulado) THD102KF 97->	FM12.340, 380, 420 D12C 00->
R 480 DC16-02 05->	B10M 245 EDC (Bi-Articulado) DH10A245 98->	NH12.340, 380, 420, 460 D12C 98->
R 500 HighLine DC16-04 01/08->	B10M 245 EDC DH10A245 98->	NL10.320 D10A 96->
T 112 E Intercooler 10.6 L 24V SOHV L6 98->99	B10M 285 EDC (Articulado) DH10A285 98->	NL10.320 EDC ELECTRONIC D10A 96->
T 112 ES intercooler 10.6 L 24V SOHV L6 98->	B10M 285 EDC (Bi-Articulado) DH10A285 98->	NL10.340 TD102FS 90->
T 112 EW Intercooler 10.6 L 24V SOHV L6 04->	B10M 285 EDC DH10A285 98->	NL10.360, 410 EDC ELECTRONIC TD123E / TD123ES 96->
T 112 H intercooler 10.6 L 24V SOHV L6 98->	B10M 310 THD101KC 87->	NL12.360 TD122F 93->
T 112 HS intercooler 10.6 L 24V SOHV L6 98->99	B10M 340 EDC (Articulado) DH10A340 98->	NL12.360 TD123E 95->
T 112 HW Intercooler 10.6 L 24V SOHV L6 98->99	B10M 340 EDC DH10A340 98->	NL12.410 TD123ES 95->
T 112MA/H 10.6 L 24V SOHV L6 98->99	B10M DH10A/285/340/360 95->00	
T 114 GA 320 11.7 L 24V SOHV L6 98->00	B10M THD100E 79->85	
T 114 GA 330 11.7 L 24V SOHV L6 98->	B10M THD101KC 87->	
T 114 GA 360 11.7 L 24V SOHV L6 98->05	B10R THD100D/THD102KF 78->92	
T 124 GA/GB DCS12-03 98->	B12 / B12B TD122FL 95->	
T 124 LA DSC12-02	B12.360 TD122FH 95->	
T 142 E 11.7 L 24V SOHV L6 98->05	B7R 230 PB D7B 99->	
T 142 ES intercooler 11.7 L 24V SOHV L6 05->	B7R 260 PB D7A/B 01->	
T 142 EW Intercooler 11.7 L 24V SOHV L6 06->	B7R 285 D7A 98->	
T 142 H 11.7 L 24V SOHV L6 00->	FH12.340 D12A 93->02	
T 142 HS intercooler 11.7 L 24V SOHV L6 02->05	FH12.340, 380, 420 D12C 98->	
T 142 HW Intercooler 11.7 L 24V SOHV L6 06->	FH12.380 D12A 94->	
T 143 H 11.7 L 24V SOHV L6 04->05	FH12.420 D12A 96->	