

**MAHLE**



# TechPRO® Digital ADAS

Simple and reliable calibration  
of driver assistance systems

# TechPRO® Digital ADAS

## A revolution in the workshop

*TechPRO® Digital ADAS MAHLE revolutionary system, is super simple and easy, making maintenance of adas systems accessible to all workshops. With the Targetless Digital System (patent), no additional panel is required.*

Revolutionary  
technology for a  
simple calibration

### TechPRO® Digital ADAS Full Camera (\*)(\*\*)

The standard version, allowing to quickly check and calibrate all ADAS systems based on the camera sensors installed on the vehicle.

### TechPRO® Digital ADAS Full Camera Radar (\*)(\*\*)

in addition to the standard scope of delivery, it allows installing the front accessory for the calibration of radar safety systems.

(\*) TechPRO®/Smart and licence not included.

(\*\*) Clamp Kits system availability: Rim Self-Centering Clamp Kit (12"/21"); Tyre Self-Centering Clamp Kit (13"/21") / Tyre Self-Centering Clamp Kit (13"/24")

## Why you should choose TechPRO® Digital ADAS:

- Targetless technology - it is MAHLE patented Targetless technology, the core element of the system. The versatility of the digital panel allows adapting the screen to any existing or future car makers reference protocol.
- Easy to use - it is so simple to use that you won't waste any time trying to learn or just using it: the system will guide you through all the steps of the calibration procedure.
- Fully automatic - the calibration frame is adjusted automatically, through the electric control, and any movement of the target in relation to the car, is automatic and virtual. The car never moves!
- Keystone system - Extreme accuracy is guaranteed by the self-adaptive system, which allows the software to evaluate the environmental and physical conditions (floor, distance from vehicle) and adapt the digital target image accordingly.
- Universal coverage - ensuring the largest market coverage is very important to us. The database that is behind the operation of TechPRO® Digital ADAS follows the constant development of TechPRO® self-diagnosis.

# Calibration can be completed in just 6 steps

1. In TechPRO® select maker - model. Then select "Digital ADAS": the on-line help pops up, with instructions on how the car should be positioned.



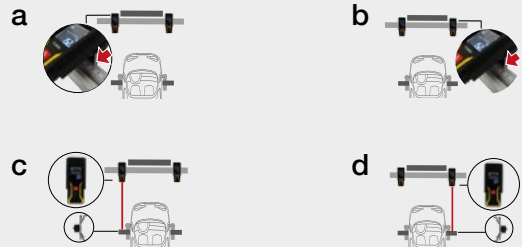
2. Place the wheel clamps on the front wheels, as indicated in the on-line help instructions. Available: Rim Self-Centering Clamp Kit; Tyre Self-Centering Clamp Kit



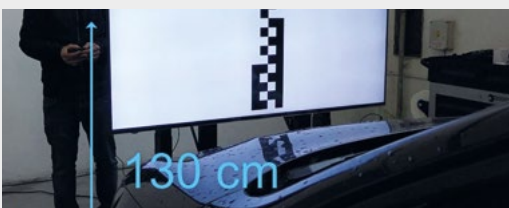
3. Place the digital target close to the car: the special support frame makes handling extremely easy.



4. Enter the required values, using the two laser distance meters. These are the parameters required to execute the Keystone function.



5. Adjust the height as indicated in the on-line help instructions. It's very simple and easy via the remote control and the motorized sliding carriage.



6. The calibration starts. The monitor will show the target adapting it to the car position, and therefore ensuring the most accurate result.





A dark grey car is shown in a testing facility. In the background, a large blue and white sign features the MAHLE logo and the text 'TechPRO® DIGITAL ADAS'. The sign also includes a diagram of a car's sensor field and a grid of dots. The car is positioned in front of the sign, and its side profile is visible. The facility has a clean, industrial appearance with white walls and various equipment.

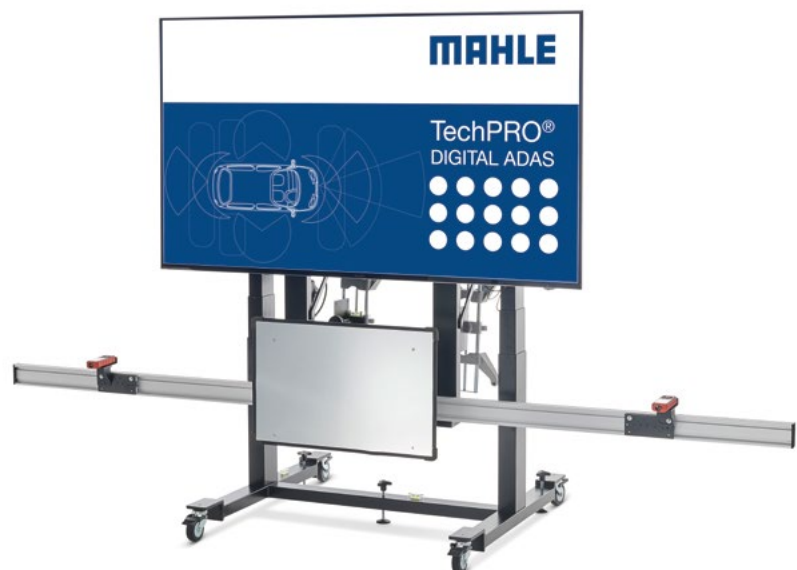
**MAHLE**

**TechPRO®**  
**DIGITAL ADAS**

## Full Camera MAHLE (Digital ADAS) 1010601671xx

Model	Front camera	Night Vision	Rear camera	Blind Spot	360° camera
Alfa Romeo	+				
Audi	+		1010601612XX (*)		1010601610XX (*) 1010601612XX (*)
BMW	+				
Citroen	+				
Fiat	+				
Ford	+				
Honda	+			1010601608XX (*)	
Hyundai	+			1010601608XX (*)	
Jeep	+				
Kia	+			1010601608XX (*)	
Mazda	+			1010601608XX (*)	
Mercedes Benz	+	1010601609XX (*)	1010601614XX (*)		
MINI	+				
Mitsubishi					1010601662XX (*)
Nissan	+				1010601663XX (*)
Opel	+				
Peugeot	+				
Renault	+				
SEAT	+		1010601612XX (*)		1010601610XX (*)
Skoda	+		1010601612XX (*)		1010601610XX (*)
Smart	+				
Subaru	+			1010601608XX (*)	
Toyota	+			1010601608XX (*)	
Volkswagen	+		1010601612XX (*)		1010601610XX (*)
Volvo	+				

+ Function present    (\*) Kit required



Accessories for specific calibrations  
available in catalogue.

## Full Camera-Radar MAHLE (Digital ADAS) 1010601669XX

Model	Front camera	Front Radar/ Lidar	Night Vision	Rear camera	Blind Spot	360° camera
Alfa Romeo	+	+				
Audi	+	+		1010601612XX		1010601610XX (*) 1010601612XX (*)
BMW	+	+				
Citroen	+	+				
Fiat	+	+				
Ford	+	+				
Honda	+	1010601608XX (*)			1010601608XX (*)	
Hyundai	+	1010601608XX (*)			1010601608XX (*)	
Jeep	+	1010601617XX (*) 1010601648XX (*)				
Kia	+	1010601608XX (*)			1010601608XX (*)	
Mazda	+	1010601608XX (*)			1010601608XX (*)	
Mercedes Benz	+	1010601615XX (*) 1010601649XX (*)	1010601609XX (*)	1010601614XX (*)		
MINI	+	+				
Mitsubishi						1010601662XX (*)
Nissan	+	+				1010601663XX (*)
Opel	+	+				
Peugeot	+	+				
Renault	+	+				
SEAT	+	+		1010601612XX (*)		1010601610XX (*)
Skoda	+	+		1010601612XX (*)		1010601610XX (*)
Smart	+	+				
Subaru	+	1010601608XX (*)			1010601608XX (*)	
Toyota	+	1010601608XX (*)			1010601608XX (*)	
Volkswagen	+	+		1010601612XX (*)		1010601610XX (*)
Volvo	+	1010601667XX (*) 1010601616XX (*)				

+ Function present (\*) Kit required

Key Features	Technical data
Patented Targetless technology	Dimensions: 2700 x 1500 x 1800 mm
Integrated communication with NEXUS 3.0 BUS system via WiFi	Weights: 75 kg
Motorized target height adjustment	65" full HD monitor
Adaptive system for automatic ompensation of vehicle positioning	Integrated control PC, Windows 10
Measurement via high precision laser distance meters	
Ultralight radar calibration panel	

MAHLE Aftermarket Italy S.P.A.  
Via Rudolf Diesel 10/a  
43122 Parma  
Italy  
Tel. +39 0521 9544-11  
Fax +39 0521 9544-90  
info.aftermarket@mahle.com

MAHLE Aftermarket Deutschland GmbH  
Dürrheimer Straße 49a  
D-78166 Donaueschingen  
Germany  
Tel. +49 771 89653-24200  
Fax +49 771 89653-24290  
mss.sales.de@mahle.com

MAHLE Aftermarket S.L.U.  
C/Mario Vargas Llosa 13  
Pol ind Casablanca  
28850 Torrejón de Ardoz, Madrid  
Spain  
Tel. + 34 91 888 6799  
Fax + 34 91 888 6311  
administracion.iberica@mahle.com

[www.mahle-aftermarket.com](http://www.mahle-aftermarket.com)  
[www.mpulse.mahle.com](http://www.mpulse.mahle.com)