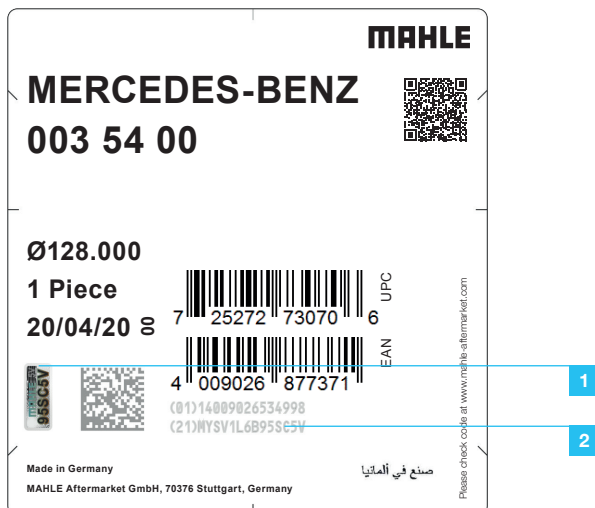


The safety standards

All changes and new features at a glance

The white security labels are glued to the MAHLE packaging without part number.

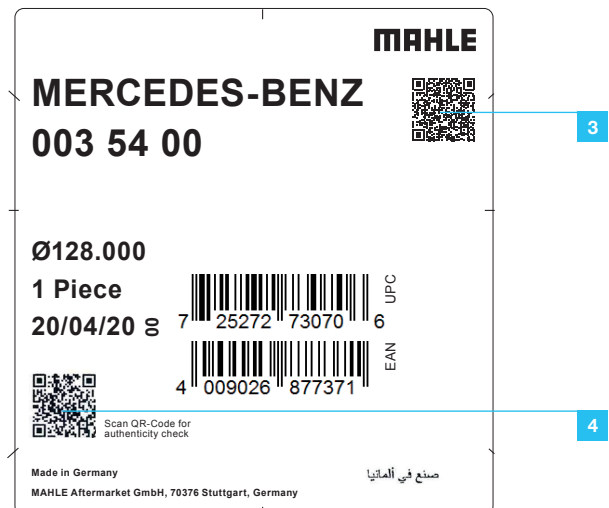
Old version



- 1 VeoMark and
- 2 MAPP code will be removed in the future



New design beginning in April 2020



- 3 QR code for production information remains unchanged
- 4 QR code for authenticity check appears in a new position: scan QR code to check product authenticity



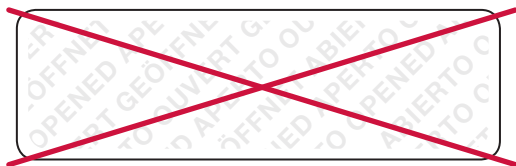
An additional security feature: the security strip

The security strip is affixed across the opening flaps of goods packed in Europe and serves as a seal. When the security strip is pulled off, the word "OPEN" becomes visible.

Old version



Unopened security strip



Security strip opened on the packaging

New design beginning in April 2020



Unopened security strip



Security strip opened on the packaging



Removed part



Damaged security strip