

TB-1055

Issued: August 22, 2011

CASTING NUMBERS VS. PART NUMBERS

It is important not to utilize piston casting numbers for piston selection. Doing so can lead to instances of poor performance and engine failure.

Casting numbers are **NOT** linked directly to a specific OE part number. The same casting number can be used to produce several different types of pistons with completely different design attributes. The differences could include but are not limited to:

- Ring groove design/placement
- Valve pocket number/placement
- Bowl configuration

Image #1 shows two Genuine OE Caterpillar® pistons with the same casting numbers.



Images #2A and 2B show a close-ups of the casting numbers for these same pistons.

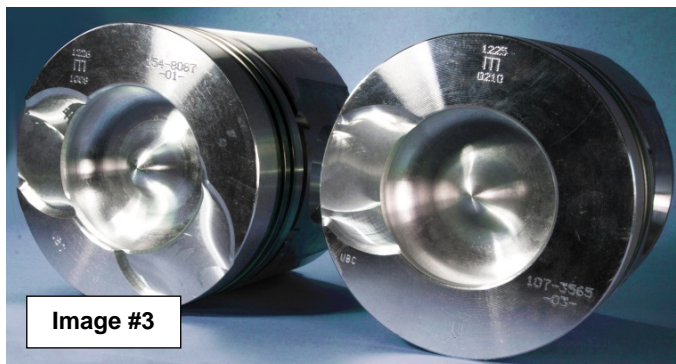
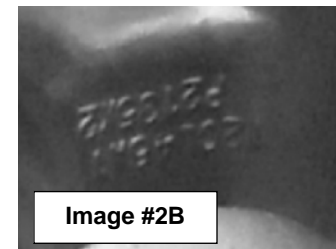


Image #3 shows the piston crowns of these same two pistons. Notice how two pistons with the same casting number can have distinctively different crown designs. The piston on the left (OE# 154-8087) has two valve pockets and piston on the right (OE#107-3565) has only one valve pocket.

This is just one example where using a casting number could lead to a misapplication of parts.

When selecting a part for an engine use the look-up criteria designated by that engine manufacturer or the OE number found on the part.

For further information contact: